

## WOLVERINE BUILDING

152,000 SF BLDG  
PRODUCTION/WAREHOUSE



1 WOLVERINE DRIVE, BOONEVILLE, MS 38829

### BUILDING SPECIFICATIONS

Available Size:	152,382
Expandable Size:	300,000+
Site Size:	40 Acres
Ceiling Height:	35' Peak 29' Eave
Dock Doors:	4
Drive In Doors:	6
Power:	4000 KVA 6000 AMP
Office:	5,895 SF
Column Spacing	74' x 20'
Cranes:	(4) 5 Ton

### SITE SPECIFICATIONS

#### -LOCATION

The facility is located in the established Prentiss Co/Booneville Industrial Park with robust utilities. The facility is also 5 minutes from Northeast MS Community College which provides customizable workforce training assistance. Located only 30 minutes from Tupelo, MS, the regional retail hub of NE Mississippi.

#### -ACCESS

The facility is 3 miles from US Hwy 45, which provides 4-lane connection to I-22 (25 mins) and to US Hwy 72 (15 mins). Within 50 miles of two inland ports. 100 miles to Memphis International Airport.

#### -FEATURES

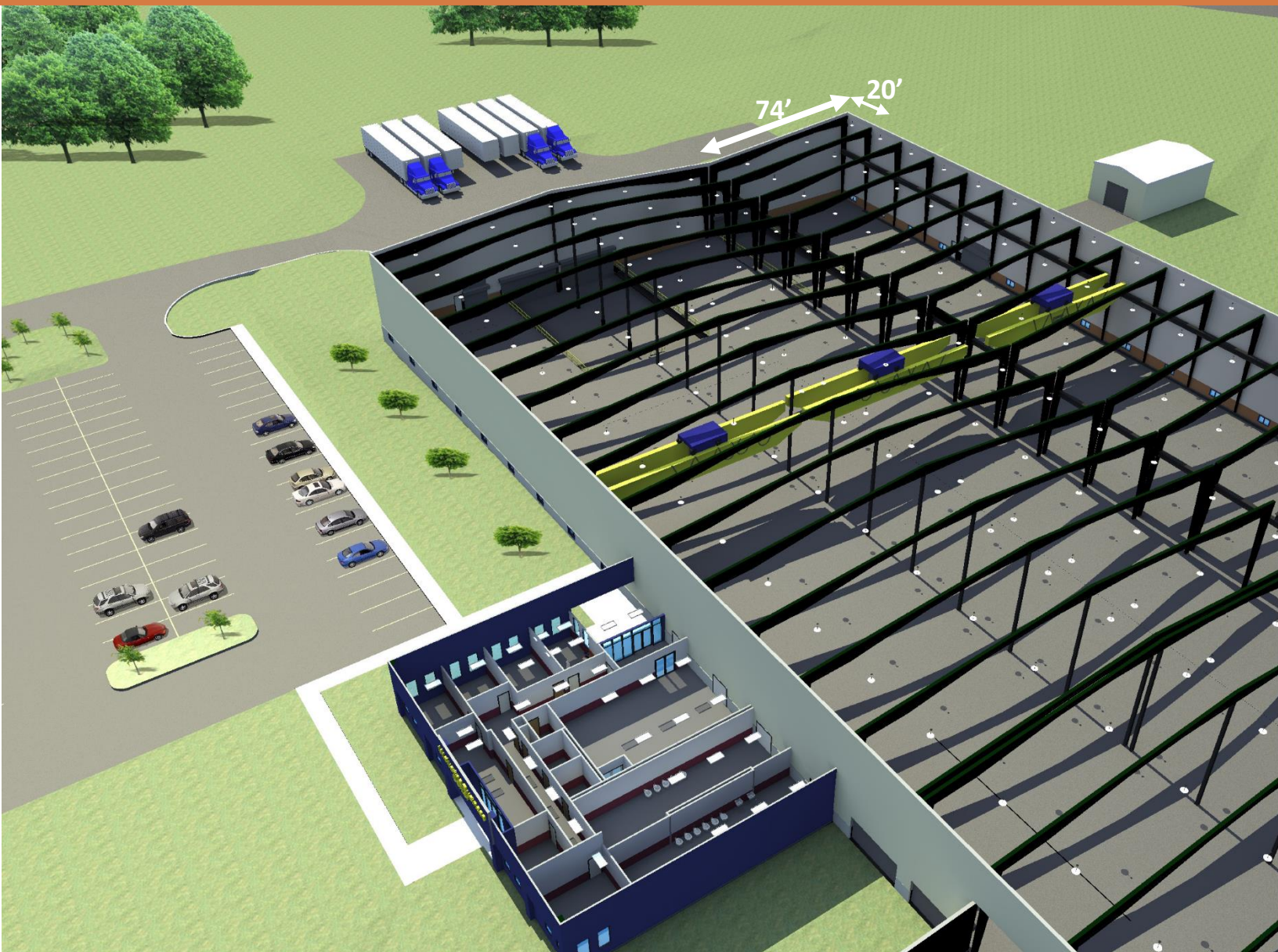
Facility has 4 cranes that travel full length of building. Facility is expandable to over 300,000 SF. Local and State incentives available.





## WOLVERINE BUILDING

152,000 SF BLDG  
PRODUCTION/WAREHOUSE



Total SF: 152,382  
Office: 5,895 SF  
Building Dimensions: 620' x 230' w/ 40' x 120' office offset  
Ceiling Height: 29' Eave - 35' Peak  
Floor: 6" - 10"  
Column Spacing: 74' x 20'

